



LeRoy Neiman, *Moby Dick assaulting the Pequod*, Serigraph 19" x 30", 1974



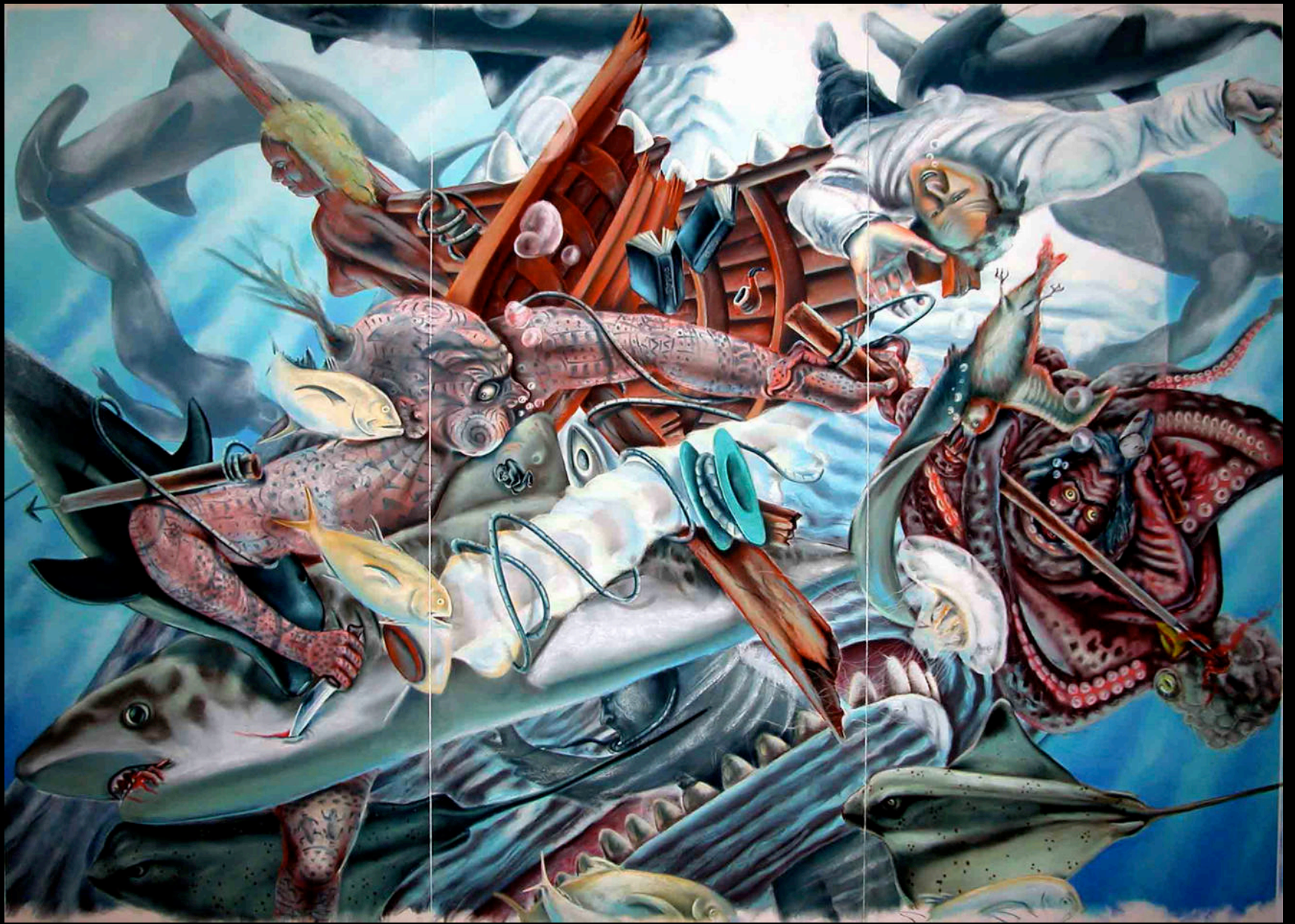
Claus Hoie, *Pursuit of the Great White Whale*, Watercolor on paper, 27" x 39", 1988



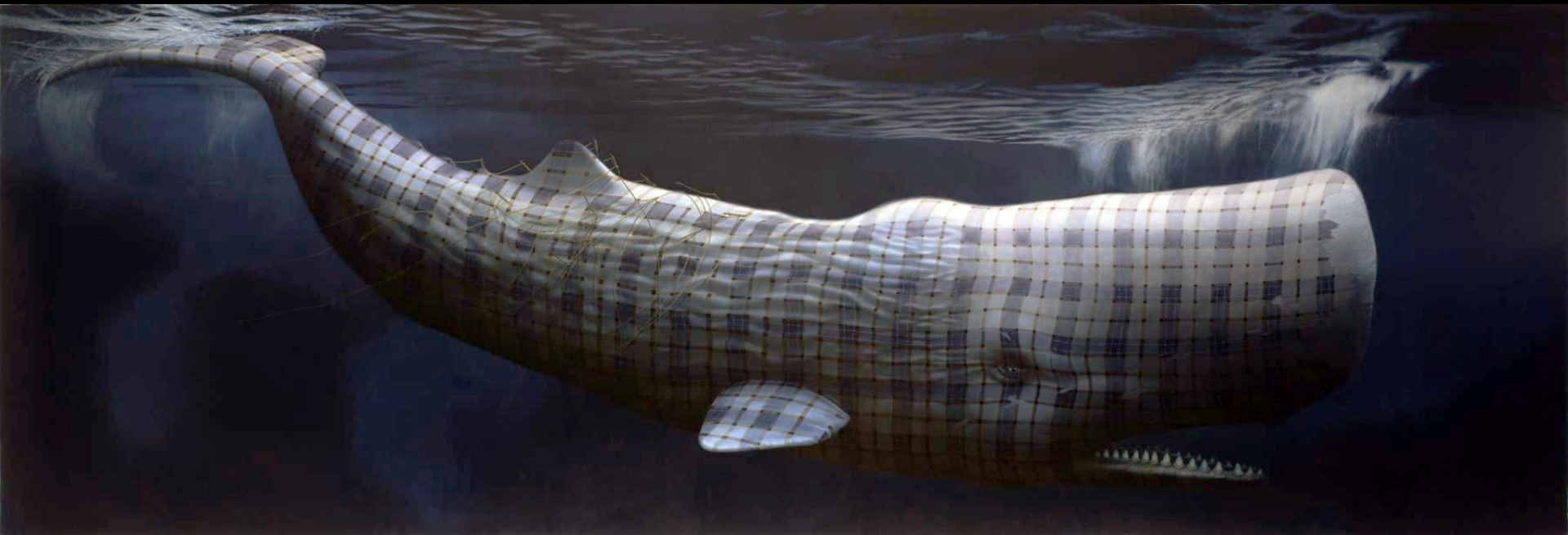
Benton Spruance, *Strike through the Mask from Moby Dick*, lithograph, 22" x 16", 1968



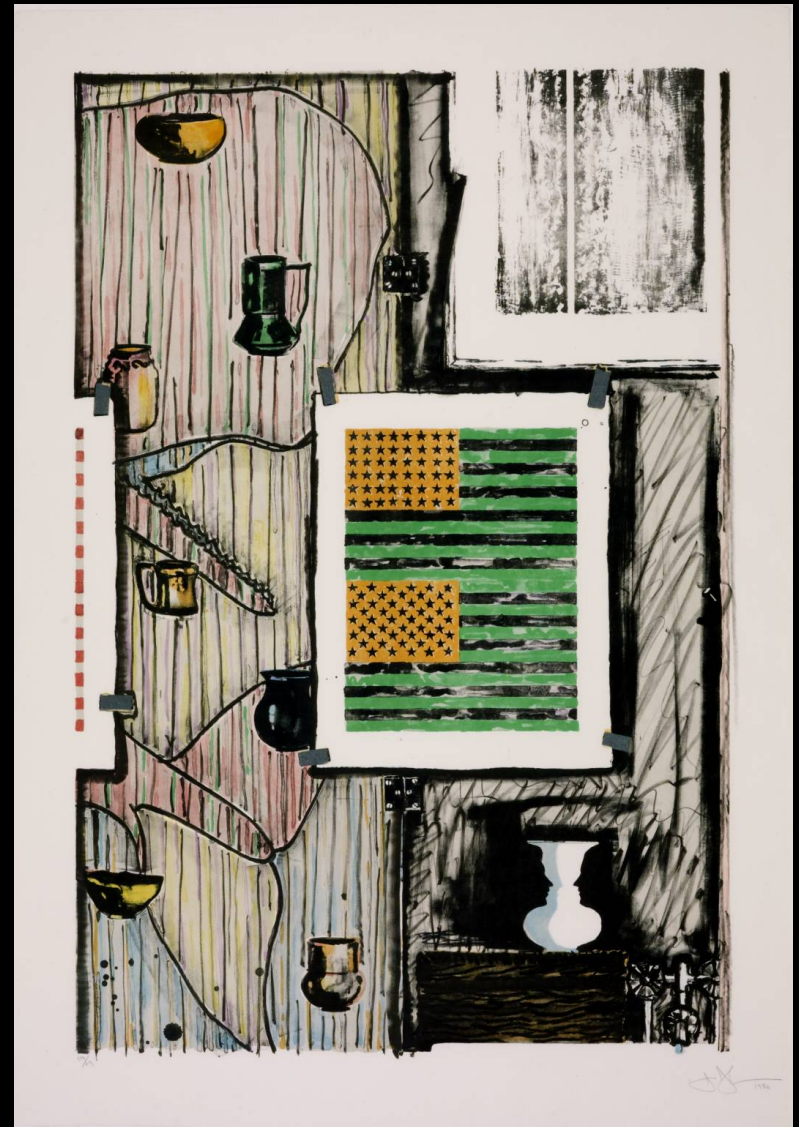
Benton Spruance, *The Whiteness of the Whale*, lithograph, 22 " x 16", 1967



Mark Milloff, *Queequeg's Long Last Dive*, Pastel on paper, 48" x 84", 2006



Sean Landers, *Moby Dick (Merrilees)*, Oil on linen, 112" x 336", 2013

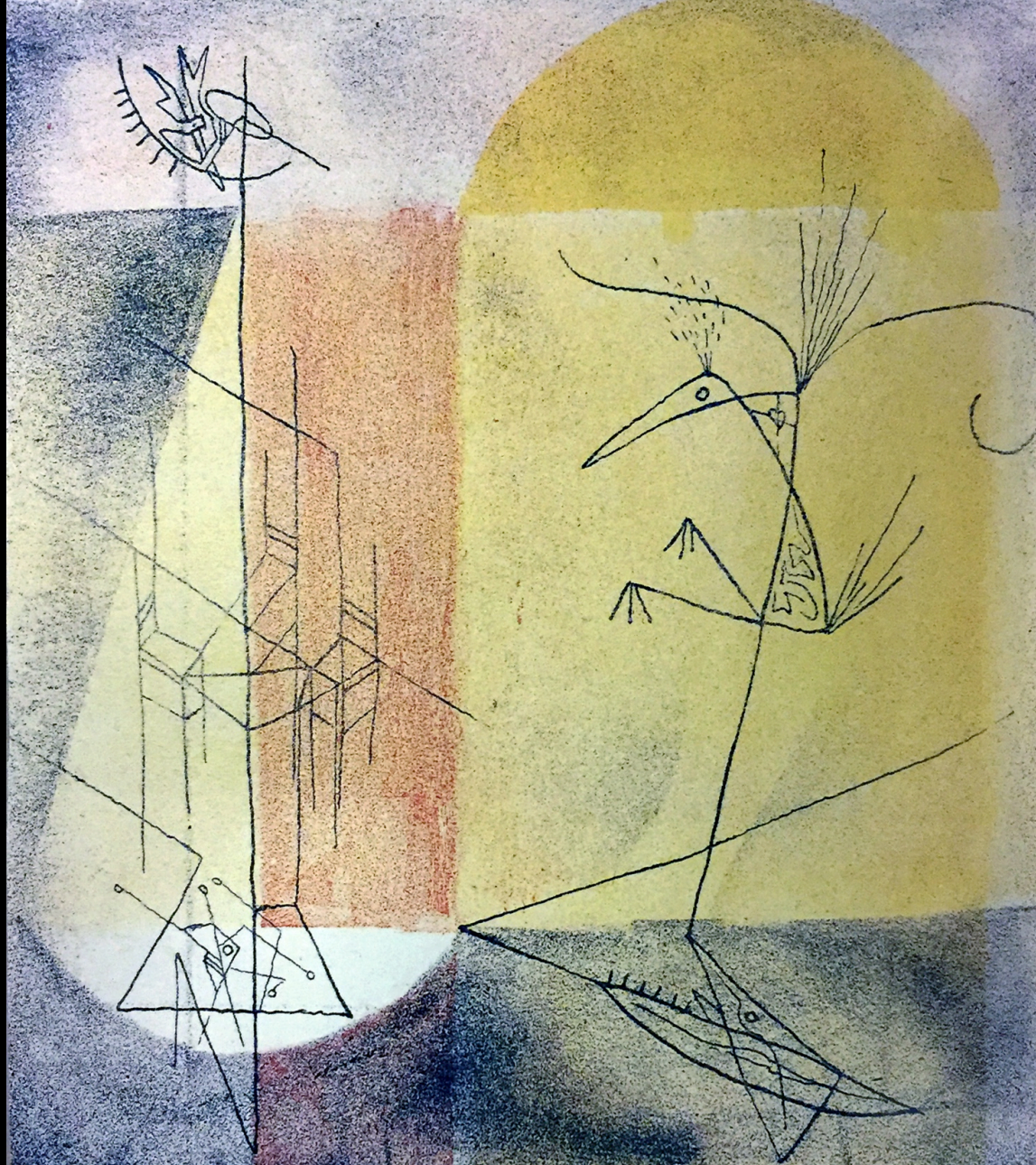


Jasper Johns, *Ventriloquist*, Encaustic on canvas, 75" x 50", 1983



Karl Knaths, *Moby Dick*, Oil on canvas, 41" x 27", 1935





Norman Ives, *The Symphony from Illustrations for Moby Dick*, Litograph, 6" x 5", 1950



Paul Jenkins, *Hommage a Melville*, Tempera on paper, 46" x 24", 1953



Paul Jenkins, *Le Poisson Blanc*, Oil and enamel on paper, 26" x 39", 1954



Robert Motherwell, *The Tomb of Captain Ahab*, Oil on canvasboard, 8" x 10", 1953



Sam Francis, *The Whitens of the Whale*, Oil on canvas, 8'8" x 7', 1957



Jackson Pollock, *Passiphae*, Oil on canvas, 56" x 96", 1943



Jackson Pollock, *Blue (Moby Dick)*, Gouache and ink on composition board, 18" x 23", 1943



Frank Stella, *State I from Moby Dick Deckle Edges*, 28" x 47", Digital Print, 1993





Frank Stella, *The Whiteness of the Whale*, Paint on aluminum, 147" x 121" x 45", 1987



Frank Stella, *Fedallah and The Whiteness of the Whale*, Installation in Whitney Museum



Eelen Lin, *The Gam*, Oil and acrylic on canvas, 36" x 48", 2017



Eelen Lin, *The Town-Ho Story*, Oil and acrylic on canvas, 28" x 36", 2018